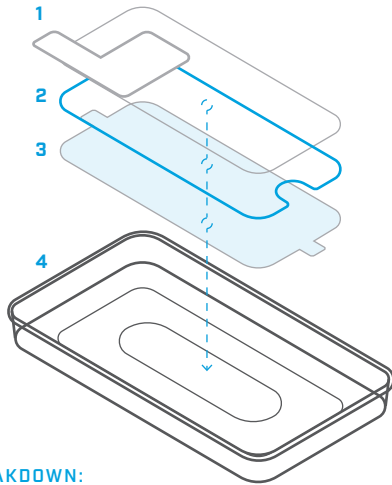


**EXPRESS ALIGN
INSTALL**



BREAKDOWN:

- 1 RELEASE LINER**
A clear film that protects the adhesive side of the protector.
- 2 GLASS PROTECTOR**
The thin, ultra-strong glass that will protect your device.
- 3 CAP SHEET**
A clear film that protects the anti-smudge coating on the glass.
- 4 EXPRESS ALIGN TRAY**
This plastic tray precisely aligns the glass to your device.

OPEN TO GET STARTED →

! BEFORE YOU BEGIN

- Remove case from your phone (if any)
- Place phone on a flat surface, screen-up
- Clean your phone's screen thoroughly
- Watch our install video: bodyguardz.com/install

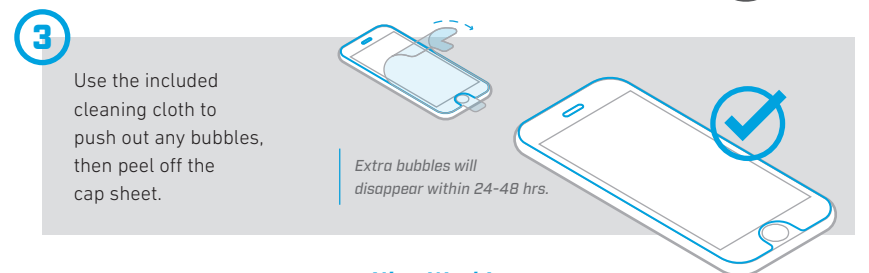
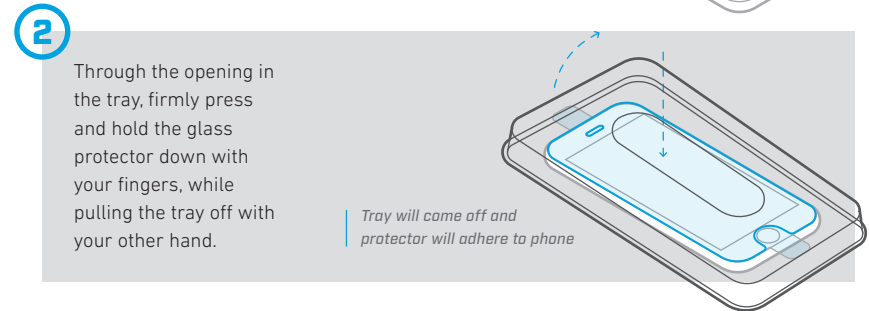
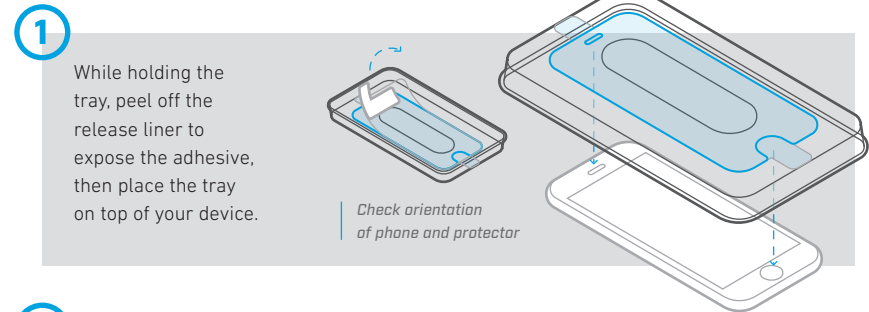
PRO TIPS

DUST REMOVAL AFTER INSTALLATION:

Use the provided dust removal stickers to pull out any trapped dust. Carefully lift up the corner of the glass closest to the dust particle and place the sticky side of the strip against the piece of dust. Then, pull dust sticker straight out.

TO REMOVE PROTECTOR:

Carefully lift one corner and slowly pull the glass off your device.



Nice Work!
Installation is complete.

BODYGUARDZ PURE®/PURE 2®/SPYGLASS® WITHOUT EXPRESS ALIGN®

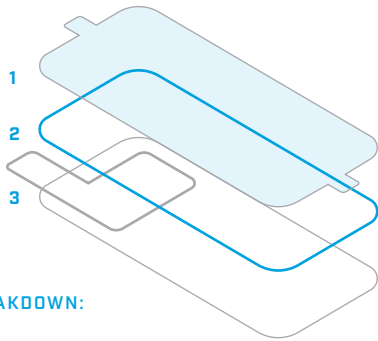
INSTALLATION INSTRUCTIONS

BODYGUARDZ®

⊗ **DUST IS THE ENEMY**

Before you begin installation, use the provided microfiber cloth and dust stickers to thoroughly clean the screen of your device.

INSTALL VIDEO:
bodyguardz.com/install

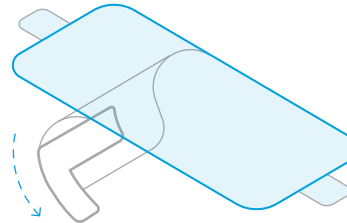


BREAKDOWN:

- 1 CAP SHEET**
A clear film that protects the anti-smudge coating on the glass.
- 2 GLASS PROTECTOR**
The thin, ultra-strong glass that will protect your device.
- 3 RELEASE LINER**
A clear film that protects the adhesive side of the protector.

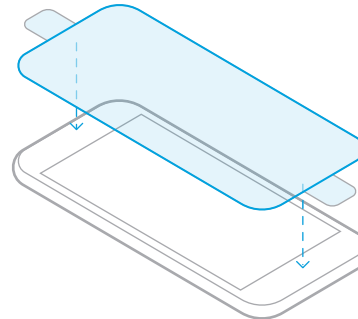
1

Hold the edges of the protector and peel off the release liner.



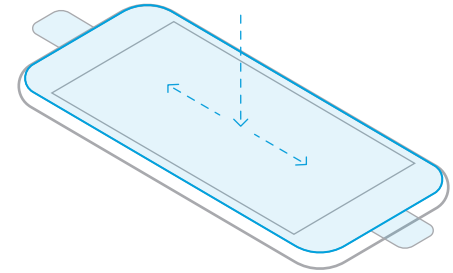
2

Align the protector over your device and gently lay it down.



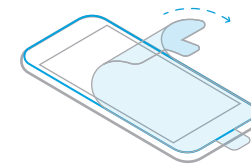
3

Press down on the center of the protector to adhere it to the screen.



4

Use the included cleaning cloth to push out any bubbles, then peel off the cap sheet.



Extra bubbles will disappear within 24-48 hrs.

Nice Work!
Installation is complete.

PRO TIPS

DUST REMOVAL AFTER INSTALLATION:

Use the provided dust removal stickers to pull out any trapped dust. Carefully lift up the corner of the glass closest to the dust particle and place the sticky side of the strip against the piece of dust. Then, pull dust sticker straight out.

TO REMOVE PROTECTOR:

Carefully lift one corner and slowly pull the glass off your device.